

# Habitat Conservation Fund



Caroline Bartolome  
Program and Education Manager



# NATURE EXPLORERS

Formerly known as the Outdoor Adventure Program. The Nature Explorers Program (NEP) is made possible through the State of California's Habitat Conservation Fund (HCF).



## Junior Explorers

3<sup>rd</sup> and 4<sup>th</sup> Graders



## Nature Explorers

Participants ages 10-17



## Nature Mentors

Participants who have reached certain program milestones, and demonstrated leadership potential

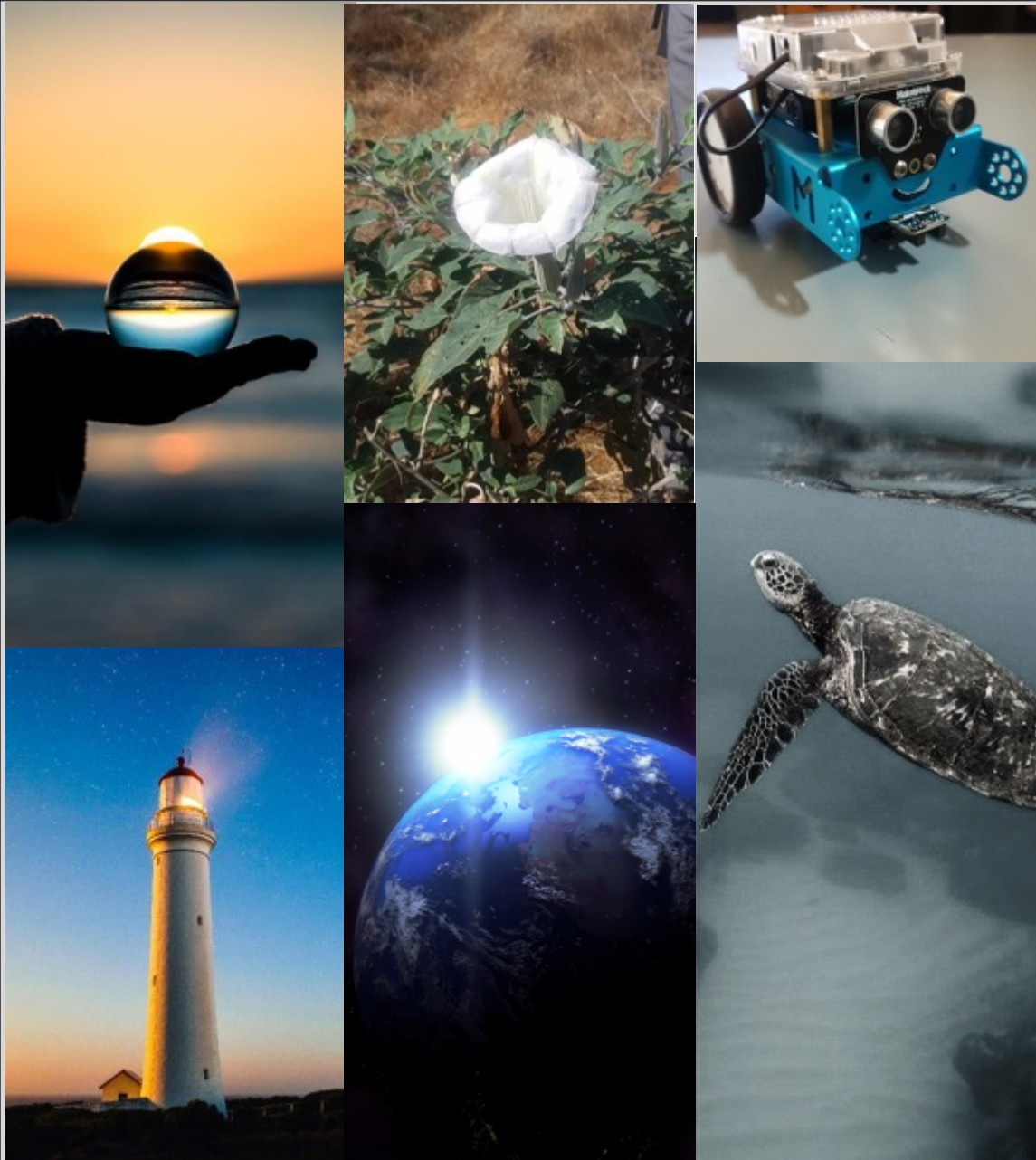




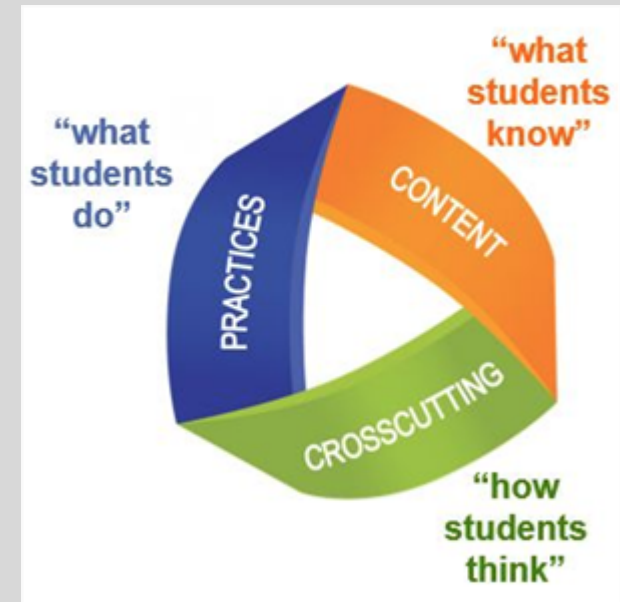
## IMPACT

Inspire a new generation of environmentally conscious individuals through nature exposure and principles of responsible recreation

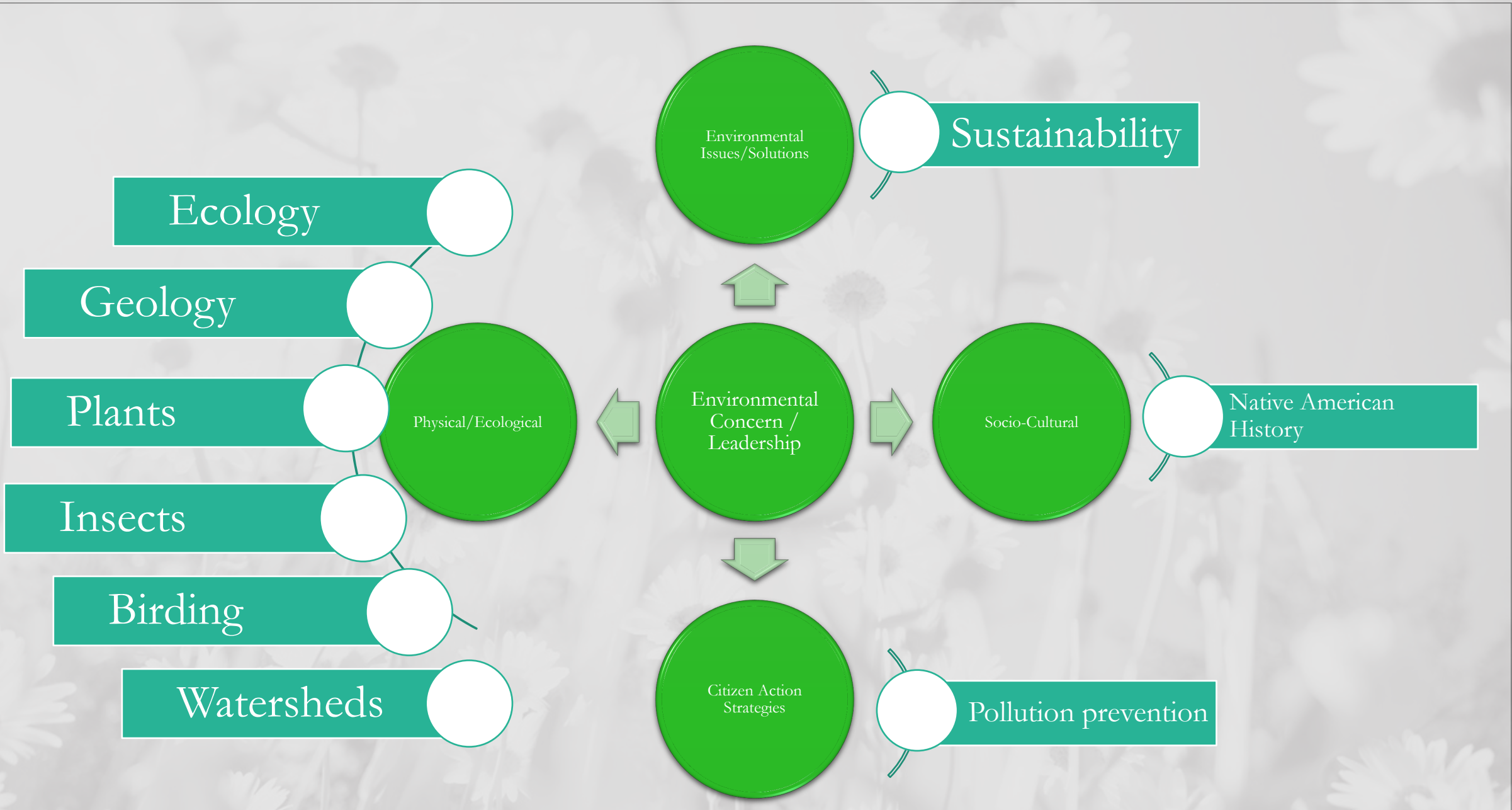




# Educational Standards



Bringing classroom  
learning to the outdoors



# JUNIOR EXPLORERS

Inspired by the California Outdoor Bill of Rights, NEP is committed to providing access to open space and ensuring all children have the opportunity to participate in fundamental experiences.

## **CLASSROOM VISITS**

Individual classroom visits  
Grade Level Assemblies

## **DISCOVERY KIT PROGRAM**

Coordination with local Park Rangers

## **CLASSROOM FIELD TRIPS**

Bringing classrooms to Local Parks; typically within the same community as the school

## **SCHOOL DISTRICT PARTNERSHIPS**

Coordination and lesson planning with classroom teachers



# NATURE EXPLORERS

Growing awareness to current environmental issues through access to natural resources, and exploration of science based systems



## **PHYSICAL/ ECOLOGICAL**

Local flora/fauna;  
ecosystems and  
resources

## **SOCIAL/ CULTURAL**

Discovering the importance of  
natural resources; investigative  
exploration of historical  
sociocultural influence

## **ROLE**

Awareness of  
individual role in the  
community and the  
impact we have on  
the environment and  
the community

## **SOLUTIONS/CITIZEN ACTION STRATEGIES**

Community engagement  
strategies and solution based  
behavior changes





# NATURE MENTORS

Aimed at increasing environmental literacy in order to foster the development of a generation of environmental stewards.

---

**LEADERSHIP AND RESPECT = ECOLOGICALLY  
SOUND DECISION MAKING**





# ANALYSIS

Using Data to make program improvements and monitor participant progress and program influence



## RESOURCES

Access and Awareness



## TRENDS

Measures of influence and Gap analysis



## PRE/POST TRIP SURVEYS

Knowledge of key environmental issues, and principles of outdoor recreation and safety



## RECOMMENDATIONS

Data Based Decision Making to Help improve programming

Demographic Info	I am a role model		I am aware of my role		I go above and beyond my role		I have a small role	
10th	1	8%		0%		0%		0%
Y	1	8%		0%		0%		0%
12th		0%	1	8%		0%		0%
X		0%	1	8%		0%		0%
6th		0%		0%	1	8%		0%
Y		0%		0%	1	8%		0%
7th	1	8%	2	17%		0%		0%
X		0%	2	17%		0%		0%
Y	1	8%		0%		0%		0%
8th	2	17%	1	8%		0%		0%
X		0%	1	8%		0%		0%
Y	2	17%		0%		0%		0%
9th		0%		0%	1	8%	2	17%
Y		0%		0%	1	8%	2	17%
<b>Grand Total</b>	<b>4</b>	<b>33%</b>	<b>4</b>	<b>33%</b>	<b>2</b>	<b>17%</b>	<b>2</b>	<b>17%</b>

# FUTURE

“Unless someone like you cares  
a whole awful lot,  
nothing is going to get better.  
It’s not.

---

**THE LORAX**

*Theodor Geisel*

